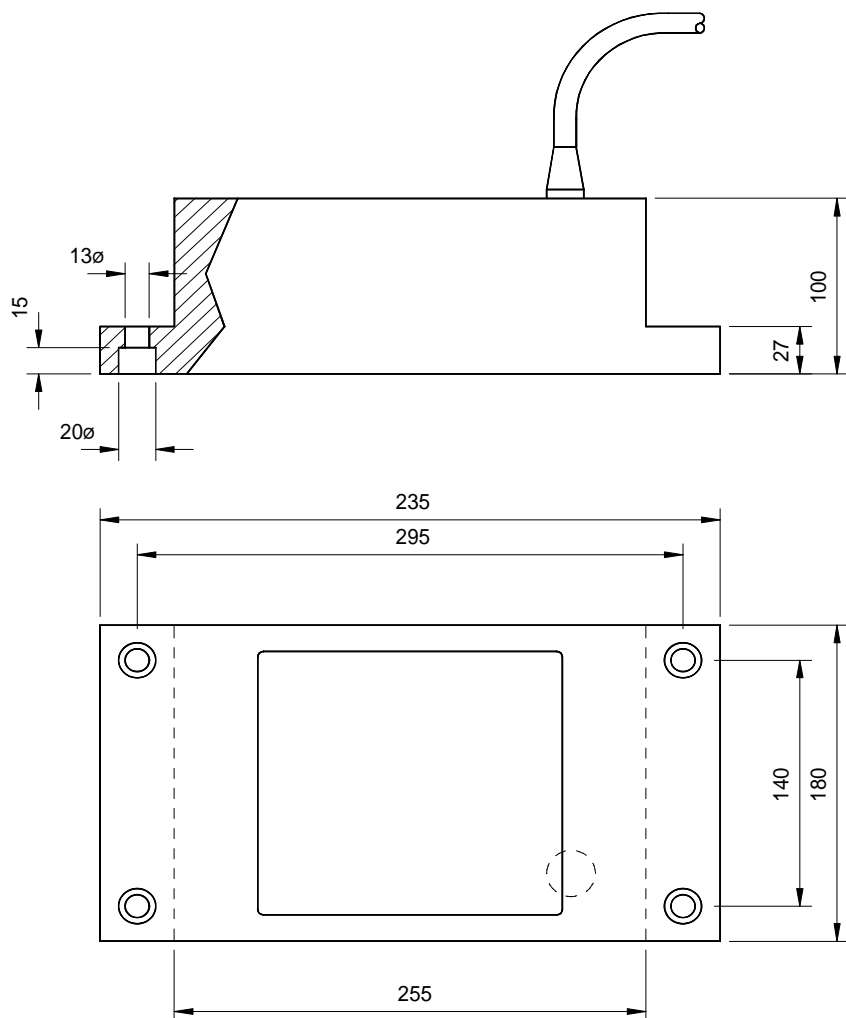


- 6 FREQUENCY OPTIONS
- GROUND DISCRIMINATION OPTION
- FISHING : NAVIGATION : SURVEYING
- HULL MOUNTING
- LOW SIDE-LOBES
- ROBUST NYLON HOUSING



All dimensions in mm

With seven pre-stressed piston elements and internal matching transformer the I47 SERIES offers high performance echo-sounding at a low cost.

Available in a choice of six different frequencies, all I47 transducers are designed to be compatible with a wide range of vertical depth finding echo-sounders.

The high impact strength nylon body provides a mechanically robust, corrosion free transducer suitable for internal or external hull mounting.

The versatility of the design is further enhanced with the option of a ground discrimination 'GD' feature providing an indication of the sea bed roughness.

MODEL I47 SERIES

Single Beam Transducers

Technical Specification

Frequency Options	24	28	30	33	38	50	kHz
Beam Angle (-3dB)	23	19	18	16.5	14	11	Degrees Conical
Transmit Sensitivity	167	168	168	167	166	171	dB re uPa/V @ 1m
Receive Sensitivity	-164	-166	-167	-168	-169	-178	dB re V/uPa
Input Power	1000	1000	1000	1000	1000	1000	Watts
Bandwidth	2.8	3.5	3.0	3.5	3.5	5.0	kHz
Nominal Impedance	75	75	100	100	100	75	Ohms

Transducer impedance can be adjusted to suit customers specification

Cable Length	10 Metres Standard (Additional lengths supplied to order)
Cable Type	Polyurethane Ø12mm 2 Core Screened
Storage Temperature	-40 to +80 °C
Operating Temperature	-5 to +70 °C

Data illustrated is taken from actual in-water measurements